



# Tracking Global Progress Towards Sustainable Tourism Development

**Rochelle Turner**

Research Director  
World Travel & Tourism Council

@WTTC / @Rochelleturner1

© Copyright 2017 World Travel & Tourism Council. All rights reserved.



Conducting research on the economic and social contribution of Travel & Tourism for 26+ years

Figures for T&T GDP, Employment, Exports Government contribution, and Investment

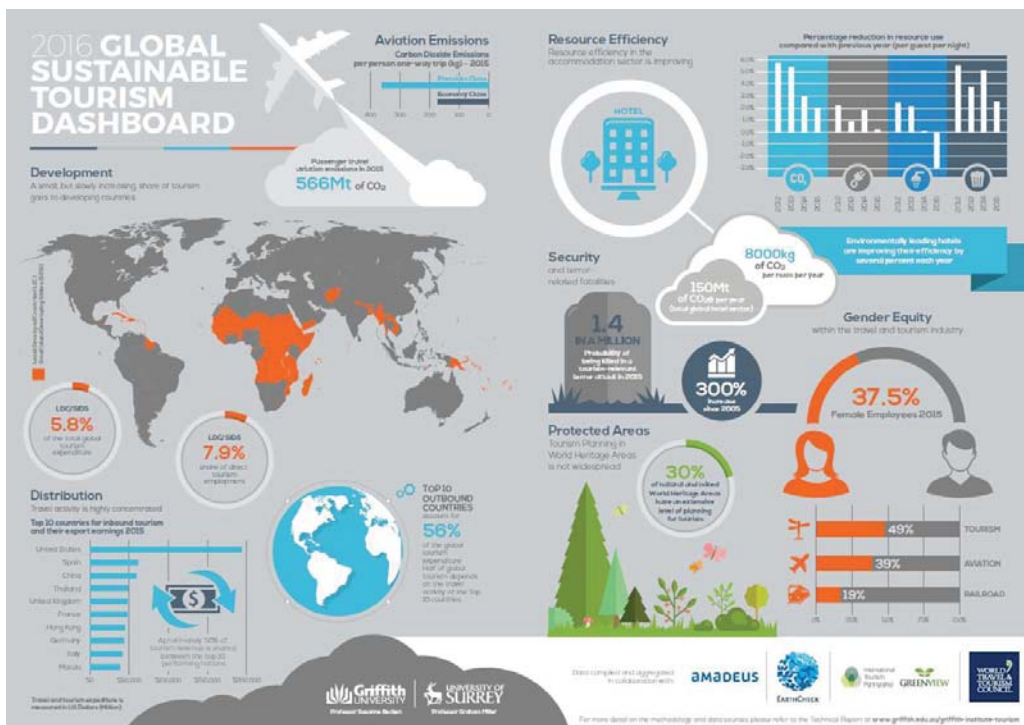
185 countries, 25 regions

## CHANGING GLOBAL PRIORITIES



**Q: How can we show contribution to the SDGs in a way that is Data-driven, Authoritative, Shared & Holistic**

## Global Sustainable Tourism Dashboard





## Tracking Global Progress Towards Sustainable Tourism Development

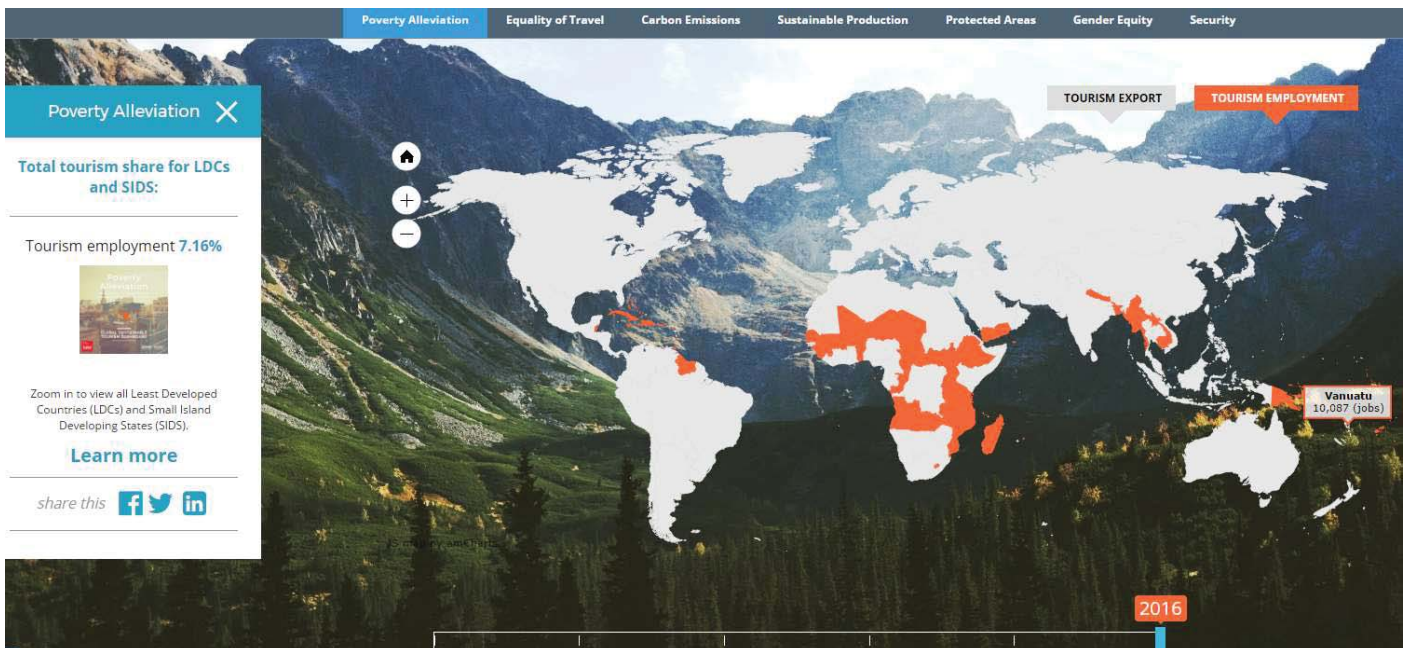


Designed to complement the many efforts to promote sustainable development

Indicator selection was informed by the 17 UN SDGs, as well as other initiatives and programmes

Indicators mostly derived from existing data sources

## Indicators presented in a way that provides important and new insights

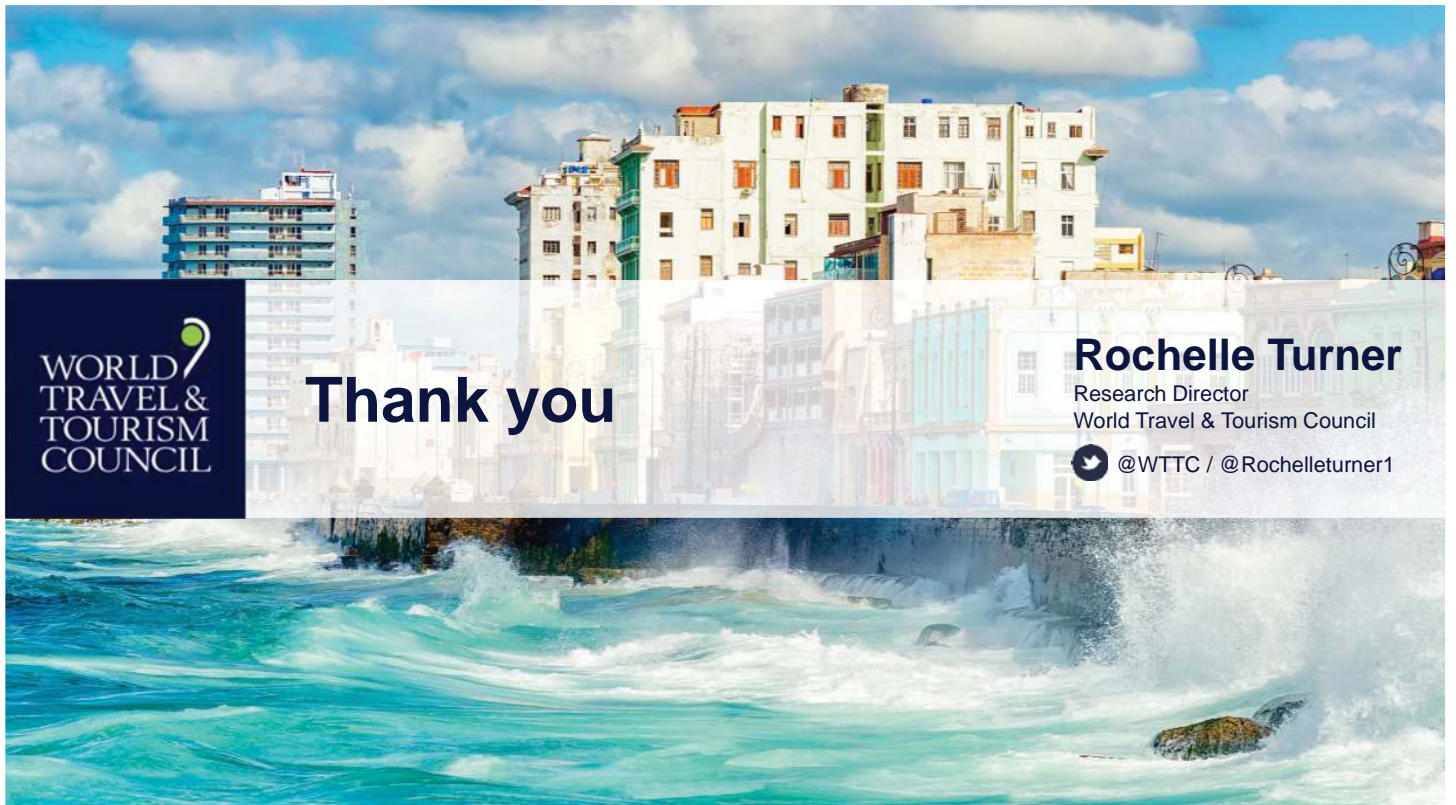


## The Dashboard is an Increasingly Robust Global Data Platform



Poverty alleviation	Equality of travel	Carbon emissions	Sustainable production	Protected areas	Gender equity	Security
<ul style="list-style-type: none"> <li>• Proportion of T&amp;T dollars and emp't in LDCs and SIDS</li> <li>• Proportion of invest't in LDCs and SIDS</li> </ul>	<ul style="list-style-type: none"> <li>• Top 10 outbound and inbound countries' proportion of all int'l travel</li> <li>• Proportion of outbound tourism from LDCs</li> <li>• Visa openness index</li> <li>• Number of tourists per head of population</li> </ul>	<ul style="list-style-type: none"> <li>• Emissions from passenger aviation</li> <li>• Emissions from cruise ships</li> <li>• Emissions from the global hotel industry</li> <li>• Emissions from airports</li> <li>• Emissions from convention centres</li> </ul>	<ul style="list-style-type: none"> <li>• % Annual improv't of hotel energy, carbon, water and waste efficiency</li> <li>• Resource use benchmarks per guest night, room night and metre<sup>2</sup></li> <li>• Destination resource efficiency</li> </ul>	<ul style="list-style-type: none"> <li>• Natural World Heritage Areas with a Tourism Plan or Strategy</li> <li>• Economic value of coral reefs (The Nature Conservancy)</li> </ul>	<ul style="list-style-type: none"> <li>• Proportion of female emp't</li> <li>• Proportion of female managers</li> <li>• Corporate ethics from WEF Competitiveness</li> <li>• Labour employment cooperation from WEF</li> </ul>	<ul style="list-style-type: none"> <li>• Number of tourism-related and tourism-relevant terror attack fatalities</li> <li>• Insurance claims by tourists relating to safety</li> <li>• Travel warnings trends</li> </ul>

[www.tourismdashboard.org](http://www.tourismdashboard.org)



Thank you

**Rochelle Turner**

Research Director  
World Travel & Tourism Council

@WTTC / @Rochelleturner1