



Malaysia
Truly Asia



SESSION 2: OPTIMIZING REGIONAL & INTERNATIONAL TOURISM FOR PEACE & DEVELOPMENT

CASE STUDY : COMMUNITY BASED TOURISM – MISO WALAI, KINABATANGAN, SABAH, MALAYSIA



MAEBEL LEONG SAI FONG,
Ministry of Tourism & Culture, Malaysia

WHAT IS CBT?

- ✓ A tool that strengthens the ability of rural communities to **manage tourism resources** while ensuring the community's participation and **poverty reduction**.
- ✓ Helps local community in **generating income, diversifying the local economy, preserving culture, conserving the environment and providing educational opportunities**.

COMMUNITY BASED TOURISM – MISO WALAI, KG. BATU PUTEH, KINABATANGAN, SABAH



Started with the **Model Ecologically Sustainable Community & Tourism (MESOCOT) Initiative**, by Batu Puteh Community in 1997 with funding from **WWF Norway**, with the support from **The State Ministry of Tourism & Environmental Development and Sabah Forestry Department**

**MAIN
AIM**

To assist the local community to **plan eco-tourism activities & build local human capacity** for managing the activities

9 STEPS TO DEVELOP & SUSTAIN CBT



FROM MESCOT (1996) TO KOPEL (2003)

- First 3 years spent on planning & capacity building
- KOPEL (Tourism Cooperative) was registered in 2003

KOPEL'S AIM

- Better Management
- Transparency & Accountability
- Financial & Technical Advice

BENEFIT TO THE COMMUNITY

- Employment to the locals
- Access to Micro Credit & Revolving Fund
- Annual Dividend for shareholders

As at 31 Dec 2016, KOPEL has 290 members and 80% of the income goes back to the members

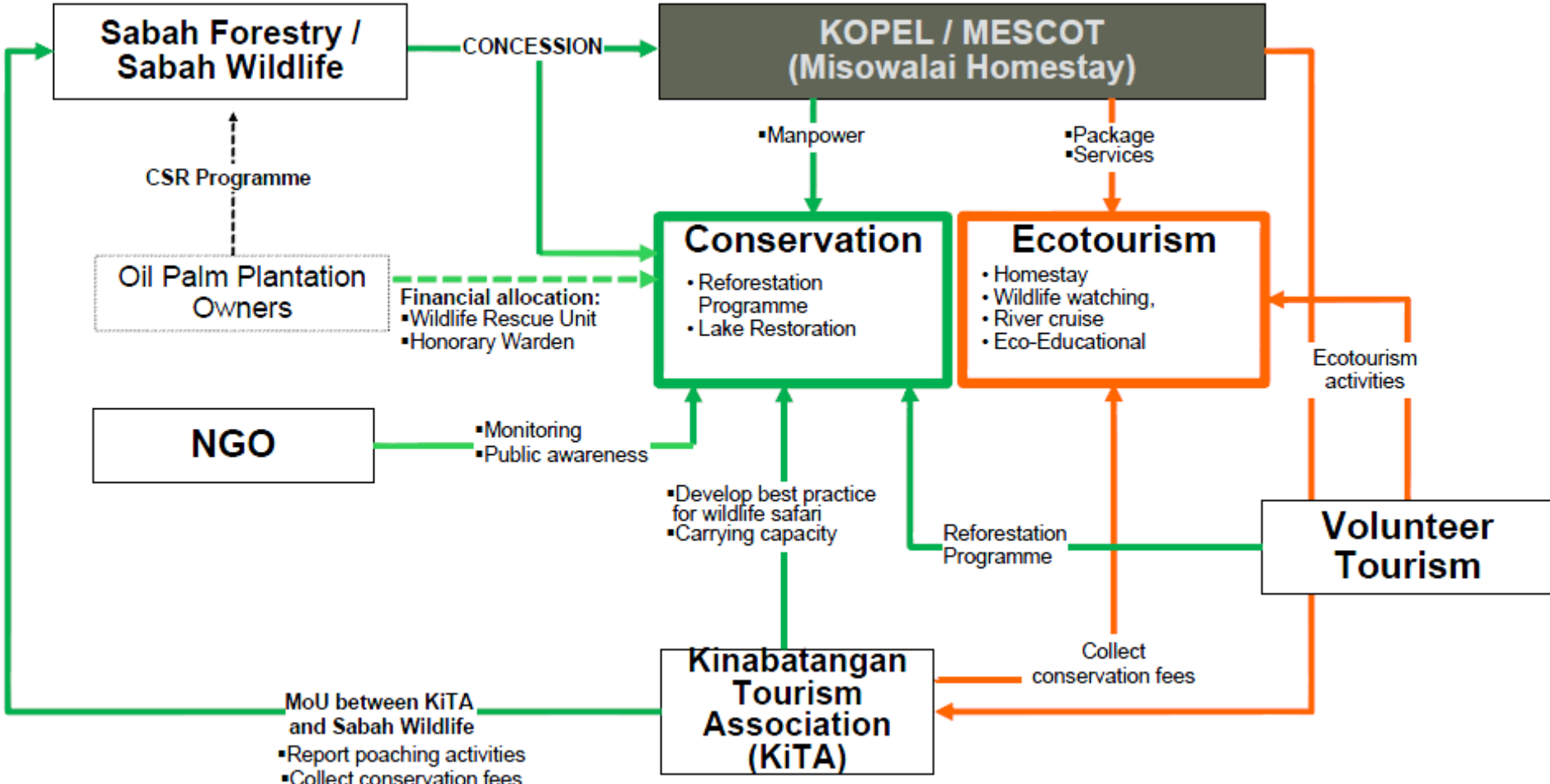
From make shift office in 1996



To modern office in training centre in 2016



KOPEL : Conservation & Ecotourism



HOMESTAY



RIVER CRUISE



ECO-EDUCATIONAL



LAKE RESTORATION

BENEFITS OF CBT

MISO WALAI, KG. BATU PUTEH, KINABATANGAN, SABAH

SOCIAL & POLITICAL

- Improve Livelihood & Standard of Living
- Improve Community Strength & Unity
- Community Empowerment
- Gender Equality (Women Empowerment)
- Expand Business & Social Network
- Better Hygiene & Sanitary Practices
- Reduce Substance Abuse (Drugs, Alcohols)
- Promote a More Structured & Organized Community Living

ECONOMY

- Job Creation
- Local Entrepreneurism
- Infrastructure Development
- Promote Locally Produced Products

ENVIRONMENT

- Better Use of Resources
- Conservation Initiatives
- Minimize Negative Impact
- Environmental Protection

CULTURE & HERITAGE

- Cultural Revitalization/ Conservation
- Strengthening Community Identity/ Pride
- Celebrates & Respects Traditional Cultural, Rituals & Wisdom
- Cultural Exchange to Domestic & International Visitors

17 PARTNERSHIPS FOR THE GOALS



16 PEACE, JUSTICE AND STRONG INSTITUTIONS



15 LIFE ON LAND



11 SUSTAINABLE CITIES AND COMMUNITIES



5 GENDER EQUALITY



2 ZERO HUNGER



1 NO POVERTY





Malaysia
Truly Asia



TERIMA KASIH THANK YOU

MAEBEL LEONG SAI FONG,
Ministry of Tourism & Culture, Malaysia

maebel.leong@motac.gov.my
maeleongsaihong@yahoo.com

